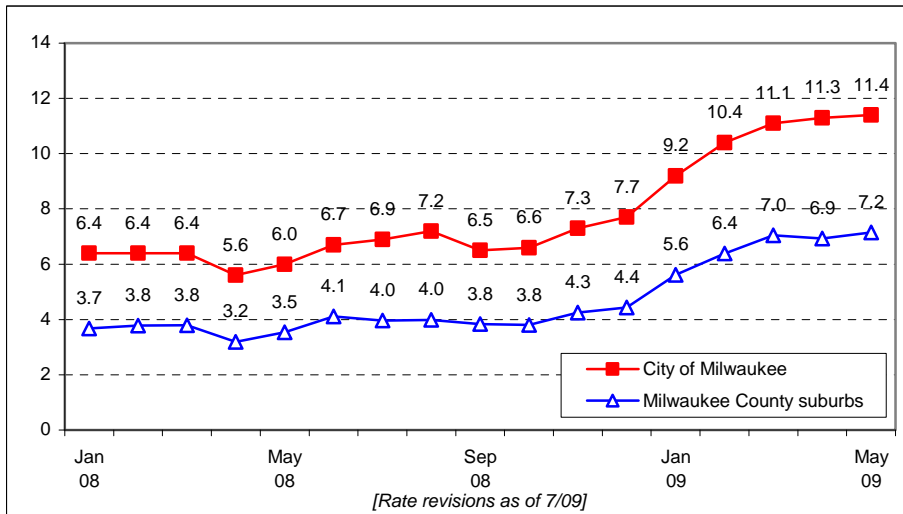




# Milwaukee Drilldown, July 2009

for the Milwaukee Area Workforce Investment Board, Inc.

*The City unemployment rate continues to climb.*



**Unemployment:** In May 2009 the estimated unemployment rate for the City of Milwaukee was 11.4%, up from 6% last May. An estimated 31,052 City workers and 13,256 suburban workers in Milwaukee County were unemployed.

**Workers on UI:** The state reported 45,130 Milwaukee County workers receiving weekly unemployment compensation checks in June, up 2,200 above the levels in May.

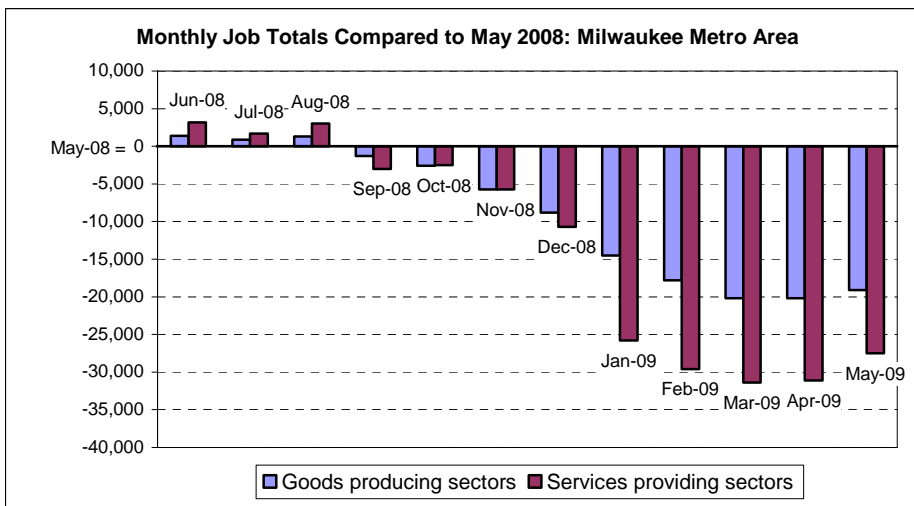
**Families receiving W-2:** 5,169 Milwaukee County families received W-2 cash support in May 2009. Of these, 2,515 had placements in community service jobs, 2,010 in transition jobs, 26 in “Real Work Real Pay” and trial jobs, and 618 were parents of newborns receiving aid. Another 1,994 families received case management services but no income support.

**Private sector job losses:** Jobs in private companies providing services were estimated down by 27,500 in May 2009, compared to May 2008 for the four-county metro area, according to the Current Employment Statistics (CES) survey of the Wisconsin Department of Workforce Development. In the goods producing sectors, jobs were down by 19,100. On the good news side, job totals in services providing sectors showed modest improvements since March.

Compared to May 2008, significant job declines have been seen in durable goods manufacturing (down by 12,700 jobs, or 14%), construction company jobs (down by 5,200 jobs, or 15%), and employment service firms (down by 4,000, or 16%). Health and education were among the few private sectors with modest employment increases from May 2008 to May 2009.

**Firm closings and layoffs:** In June 2009, 4 firms in Milwaukee County (Milwaukee Ductile Iron, Sendik’s Wyndham Village, LeHigh Phoenix, and American General Life Companies) reported anticipated closings and layoffs to the state for a loss of 371 jobs.

*Private companies in 4-county Milwaukee area have 46,600 fewer jobs than a year ago, according to state CES data.*



**Wisconsin Shares:** 14,603 Milwaukee County families received Shares child care subsidies for 29,097 children in June 2009. The number of families served is 485 more than last year in spite of countywide drops in employment.

**FoodShares:** In May 2009, 183,419 children and adults in the Milwaukee County received food stamps, up by 35,629 since last year.

**BadgerCare Plus:** 167,141 county residents were enrolled in BadgerCare Plus as of June 2009. Enrollments have increased by 24,556 over the last year.

*Drilldown Data Sources:* Wisconsin departments of Children and Families, Health Services, and Workforce Development. (7/09/09)

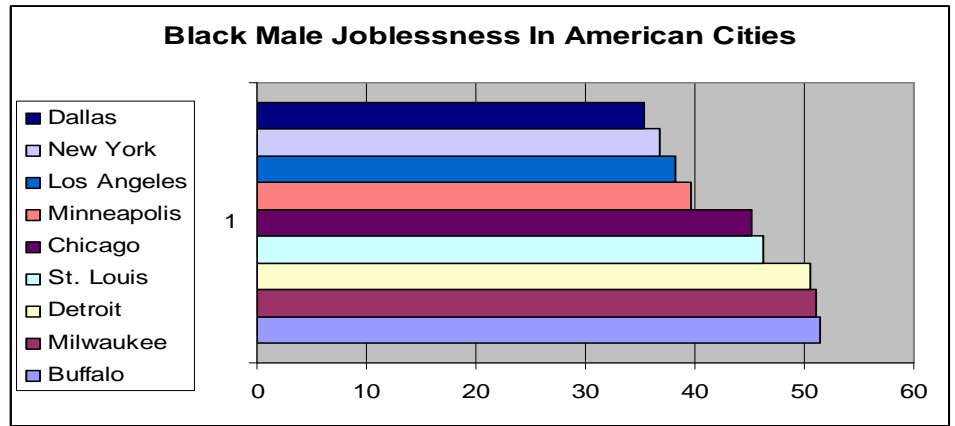
Prepared by the Employment & Training Institute, University of Wisconsin-Milwaukee and the Milwaukee Area Workforce Investment Board

Milwaukee Drill photo courtesy of Milwaukee Electric Tool Corporation

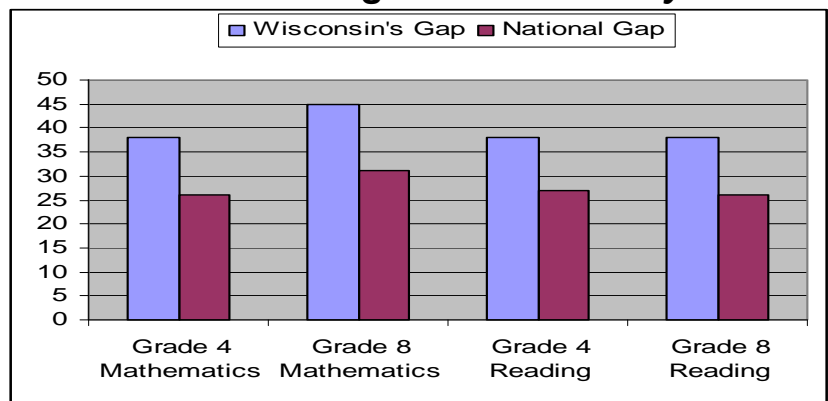
# African-American Jobless Rate among Milwaukee Men hits 57%

Milwaukee has gone from having one of the highest percentages of employed black males to the city with the nation's second highest rate of black male joblessness, with 51.1% of Milwaukee's black males not in the work force, compared to 22.9% of Latino men and 18.6% of white males. These figures include unemployed workers as well as men not in the workforce for other reasons, such as disability, incarceration, and discouragement. These most recent figures on joblessness among black men from 2007 are the highest figures ever recorded for the city of Milwaukee, and are nearly 5% higher than 2006 total of 46.8%. Considering the current recession, between 55% and 57% of the Milwaukee area's African-American males are without a job, according to a University of Wisconsin-Milwaukee researcher Marc Levine

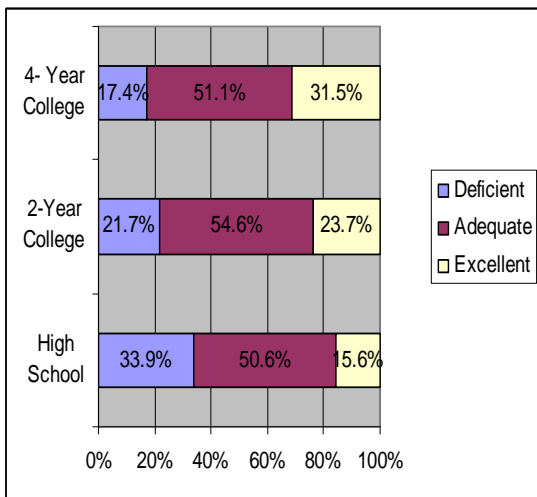
Source: "The Crisis Continues: Black Male Joblessness in Milwaukee 2007" by Marc V. Levine, University of Wisconsin-Milwaukee, Center for Economic Development



## Testing Gap between African-American and White Students Larger in WI than any other State



## Employers View New Entrants into Workforce as Unprepared



A recent study has discovered that firms hiring new entrants into the workforce are finding new workers to be ill prepared for employment in many areas. Individuals entering the workforce immediately after high school with 33.9% of employers viewing high school as providing deficient job readiness skills, compared to only 21.7% and 17.4% of two and four year colleges respectively. Further many employers are not providing work readiness training in the areas they feel are highly important, for example, nearly 70% of employers who thought creativity was important do not provide work readiness training in that area. Source: ASTD



### Workforce Information Websites:

- <http://www.milwaukeeewib.org/>
- [www.eti.uwm.edu](http://www.eti.uwm.edu)
- <http://worknet.wisconsin.gov/worknet/>
- <http://www.census.gov/>