

Pathways Out of Poverty: Enhancing Green Job Tracks in Milwaukee

The Opportunity

- Jobs For the Future (JFF) Implementation Partner for National Fund for Workforce Solutions (NFWS) invited local sites to participate in application for US Dept of Labor Pathways Out of Poverty grant
- WFA submitted existing City of Milwaukee projects – ***Milwaukee Builds*** and ***Urban Forestry*** – for enhancement with “Pathways” funds

Why?

Targeted opportunity to demonstrate the Milwaukee Area Workforce Funding Alliance (WFA) mission and goals on a specific project:

- Align public and private funds for stronger impact
- Address individual barriers to employment
- Support emerging “Workforce Partnerships”
- Identify systemic policies and practices for change

Career Pathways

Jobs For the Future received nearly \$8 million for a national demonstration project, including 5 cities:

- Chicago
- Detroit
- Los Angeles
- Philadelphia
- Milwaukee

\$1,075,000 was allocated for MAWFA to participate with its 2 projects.

Career Pathways

- Focus on “green” job pathways
 - Developing new credentials and national certifications
 - Attracting low-income individuals into growing industries
- Federal attention to women, ex-offenders & veterans
- Leveraging local resources with NFWS Model
 - Aligning Public and Private Funding
 - Strengthening Workforce Partnerships
 - Engaging Employers in a Sector-based Training Strategy
 - Addressing Policy Issues

Construction Jobs: Going Green

- Energy Efficient Retrofits
- Building Materials Recycling
- New “Green” Construction
- Weatherization
- Energy Auditing



Milwaukee Builds

Residential Properties: Neighborhood Stabilization Funds (NSP) / HOME Funds / Housing Authority of City of Milwaukee (HACM)

Training Wages: City of Milwaukee Community Development Grant Administration (CDGA)

Training Costs: Milwaukee Area Workforce Investment Board (MAWIB)

Pre-apprenticeship Programs: Wisconsin Regional Training Partnership (WRTP)

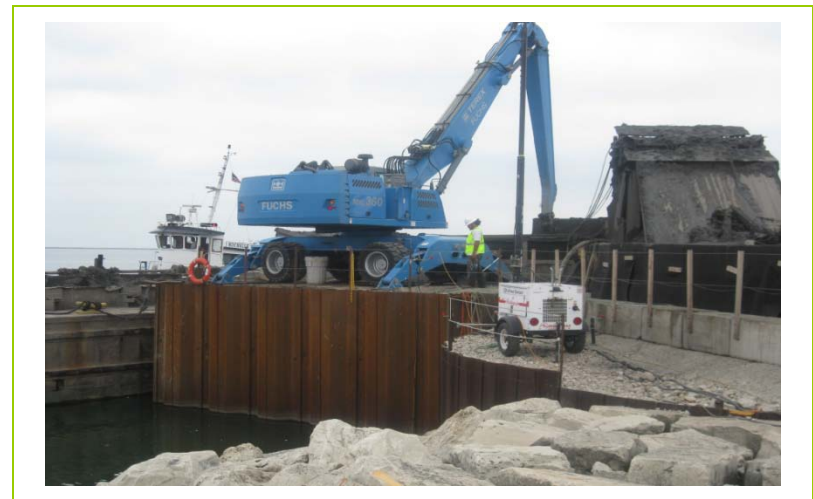
“Pathways” Enhancements



1. Address Barriers to Employment
2. Provide Additional Work Supports
3. Increase Credentials and Certificates for Job-seekers
4. Support New Employer Relationships for Placement
5. Fund Employment Retention Efforts

Urban Forestry Jobs

- Urban Arborist
- Emergency Responders
- Utility Line Workers
- Landscapers
- Heavy Equipment Operators
- Public Infrastructure Jobs



Urban Forestry

Job Training and Sites: City of Milwaukee
Department of Public Works (DPW) Division of
Forestry's *Strengthening Diversity in Urban Forestry*
Project with U.S. Forest Service

Training Wages: City of Milwaukee Community
Development Grant Administration (CDGA)

Training Costs: Milwaukee Area Workforce Investment
Board (MAWIB)

Pre-apprenticeship Programs: Wisconsin Regional
Training Partnership (WRTP)

“Pathways” Enhancements



1. Address Barriers to Employment
2. Provide Additional Work Supports
3. Increase Credentials and Certificates for Job-seekers
4. Support New Employer Relationships for Placement
5. Fund Employment Retention Efforts

Pathways Needs

- \$ 4,855,000 in local leveraged resources
- Demonstration of aligned public and private funding
- At least 300 participants tracked
- At least 197 employed in quarter after job placement
- New career pathways created, such as credentials and certifications
- Strategies for removing barriers used



Pathways Leverage

Committed

Amount

• Milw CDBG funds: <i>transitional job support & stipends</i>	\$1,000,000
• MAWIB: <i>training funds</i>	\$ 1,037,500
• WCS: <i>Drivers License Recovery help</i>	\$ 30,000
• Milw HOME funds: <i>housing acq/rehab</i>	\$525,000
• Milw Nghd Stabilization Fund (NSP): <i>housing acquisition</i>	\$500,000
• Milw Dept of Public Works (DPW): <i>urban forestry training</i>	\$200,000
TOTAL	\$3,292,500

Pathways Leverage

Sources for \$1,562,500 in 2010 & 2011

- Grants and contracts with WRTP
- Capacity-building support to training, support and placement groups
- Grants and contracts (*other than funds already shown as committed*) with training, support and placement groups
- In-kind curriculum development and actual training

Next Steps

- Issue Request for Proposals (RFP) for “Pathways” participation
- Conduct organizational assessments and capacity-building plans for selected groups
- Clarify needs of various “pathways” for job-seekers to use Pathways funds to enhance opportunities and support retention
- Identify leveraged funds and in-kind contributions from public and private funders

*U.S. Department of Labor
Pathways Out of Poverty
Grant To Jobs For the Future*

**Milwaukee Builds
and Urban Forestry**

- DPW (training)
- MAWIB (training funds)
- CDBA (participant wages)
- NSP/HACM (houses for rehab)

CONSTRUCTION
JOB

EDUCATIONAL
INSTITUTIONS

WRTP
APPRENTICESHIP
PROGRAMS

- UTILITY LINE WORKER
- URBAN ARBORIST
- LANDSCAPER

ADDITIONAL
ME2 OR
RETROFIT TRAINING

**Additional Work
Support/Removal of Barriers**

EXAMPLES:

- GED
- TRANSPORTATION
- CHILDCARE
- DRIVERS LICENSE

**Additional Credentials
+/or Certifications**

EXAMPLES:

- CDL
- OSHA 10
- LEAD ABATEMENT
- ELC CERTIFICATE
- NTIA CERTIFICATE

**Additional Job Placement
& Retention Services**

"Pathways" Enhancements + WFA Leveraged Support